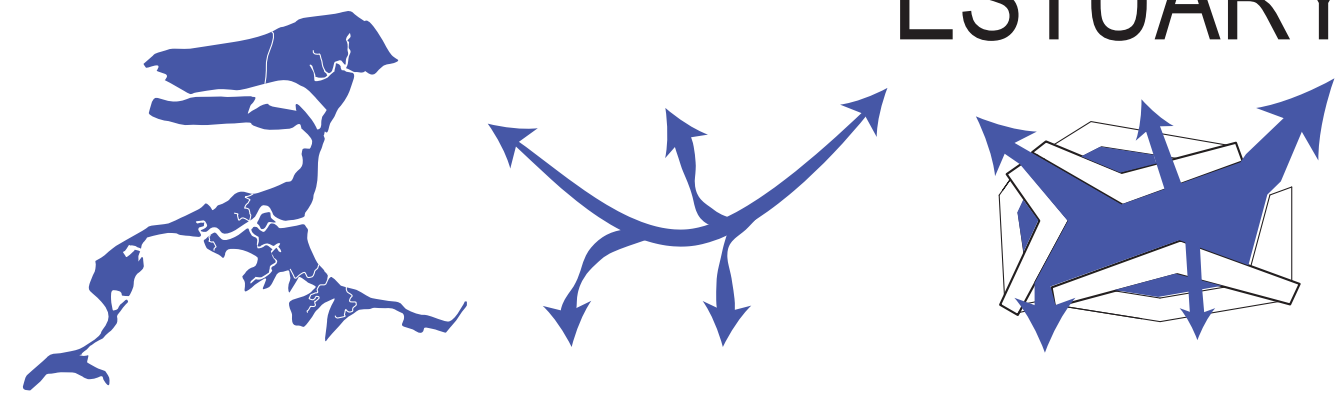


ESTUARY

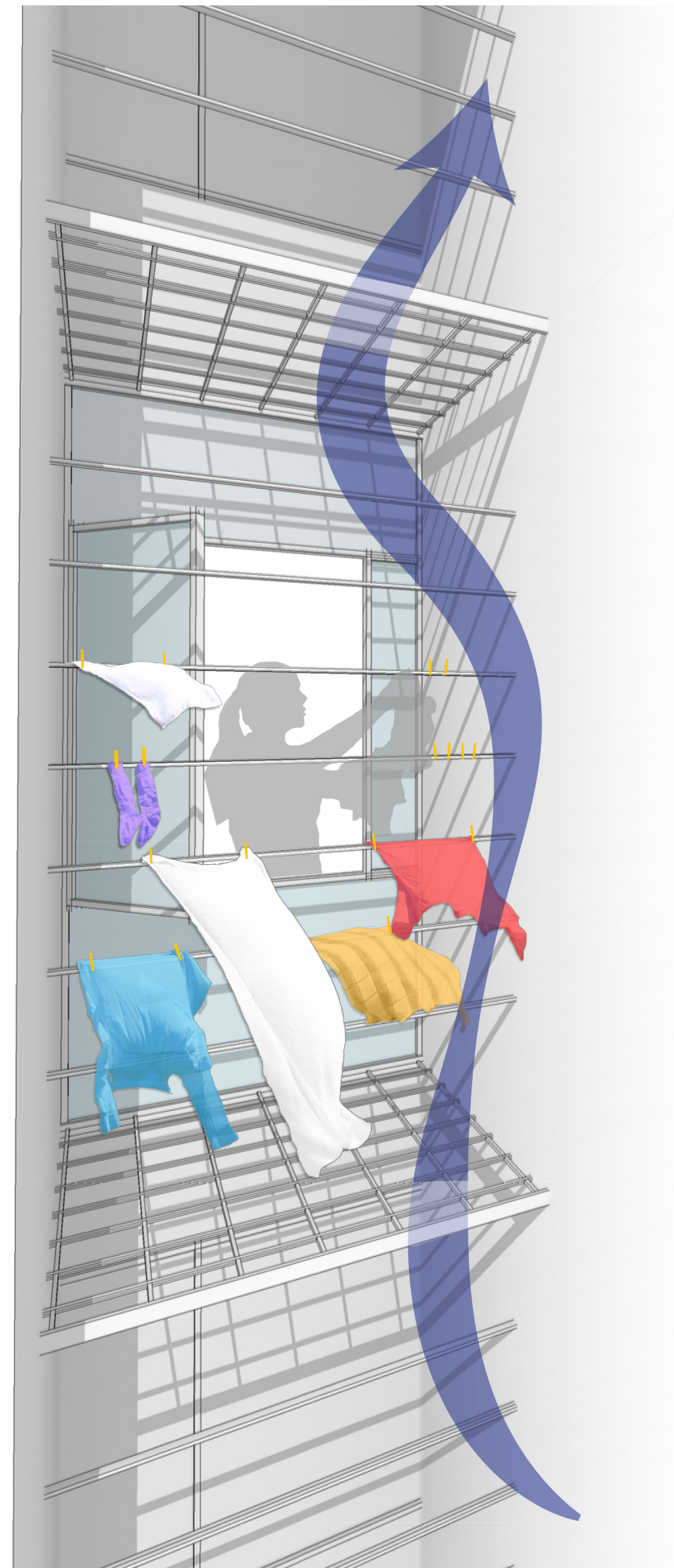


Inspired by the pre-development ecology of the Mission Bay estuarine marshes, ESTUARY comprises **three residential structures that are shaped and organized by the flow of people and systems**. These prismatic building masses envelop a central terraced community courtyard that connects the residents and also the energy and water systems below. A porous site plan allows entry and access to major campus greenway and transit connections, and invites the larger community to circulate through the courtyard spaces. Each faceted residential tower is arranged to offset individual unit views and optimize daylight harvesting and natural cooling, with residential units connected through internal atrium ventilation stack spaces.

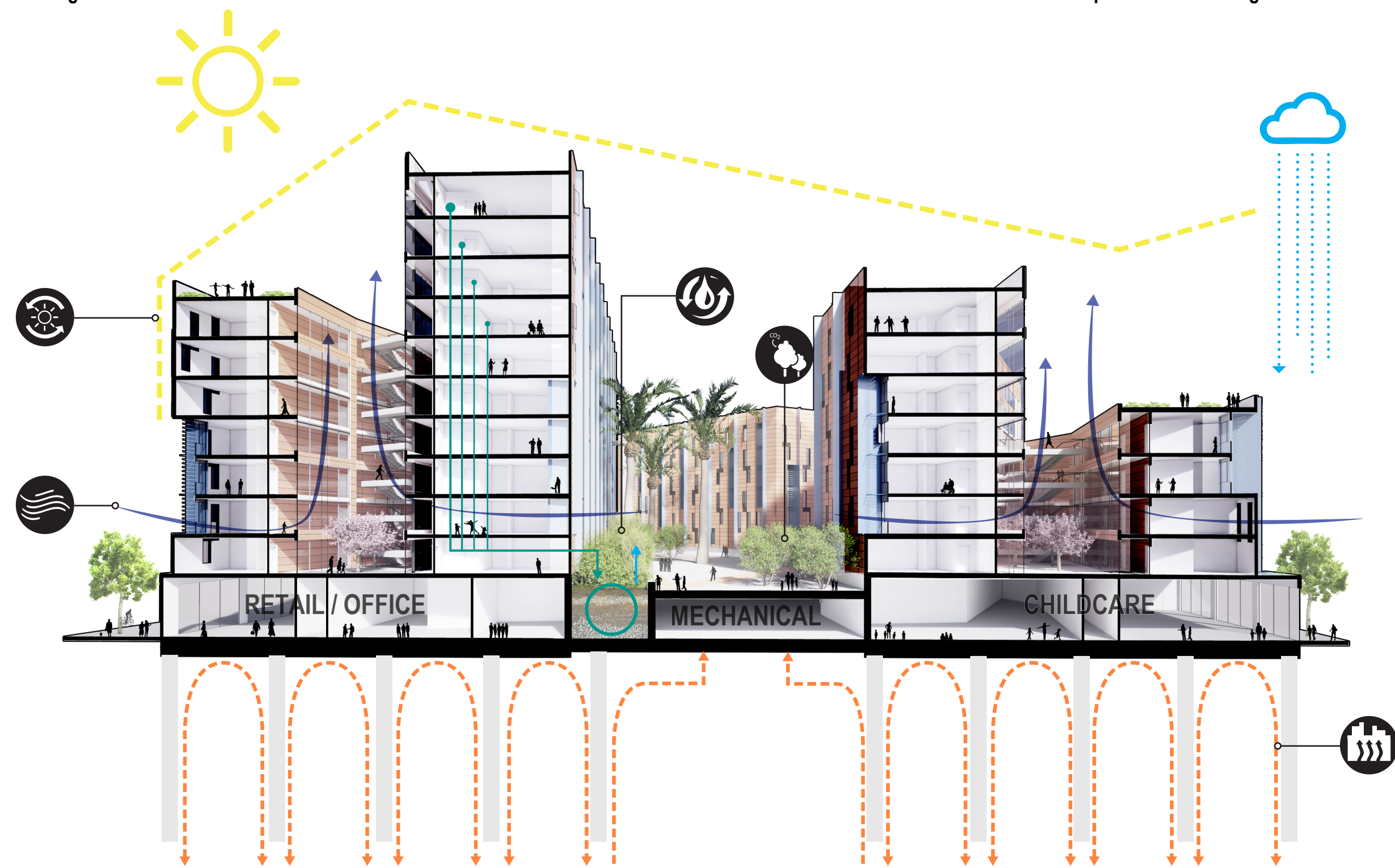
ESTUARY weaves together timeless passive strategies and high performance building envelope and renewable energy strategies, including a district heating loop that combines energy collected from the earth, sun and compost and methane sources on and below the site. Most importantly, ESTUARY also seeks to inspire user engagement and responsibility, through a celebration of human actions that drive down energy demand, including inviting external stairways, expressed passive clothes drying, occupancy energy budgets and shared community kitchen spaces. Collectively, these and other strategies encourage stewardship, social engagement and a community commitment to a zero net energy balance. ESTUARY is an icon of change, and a powerful new framework for human experience.



NODES - Nested unit plans allow passive cooling and a range of interior and shared social connections.



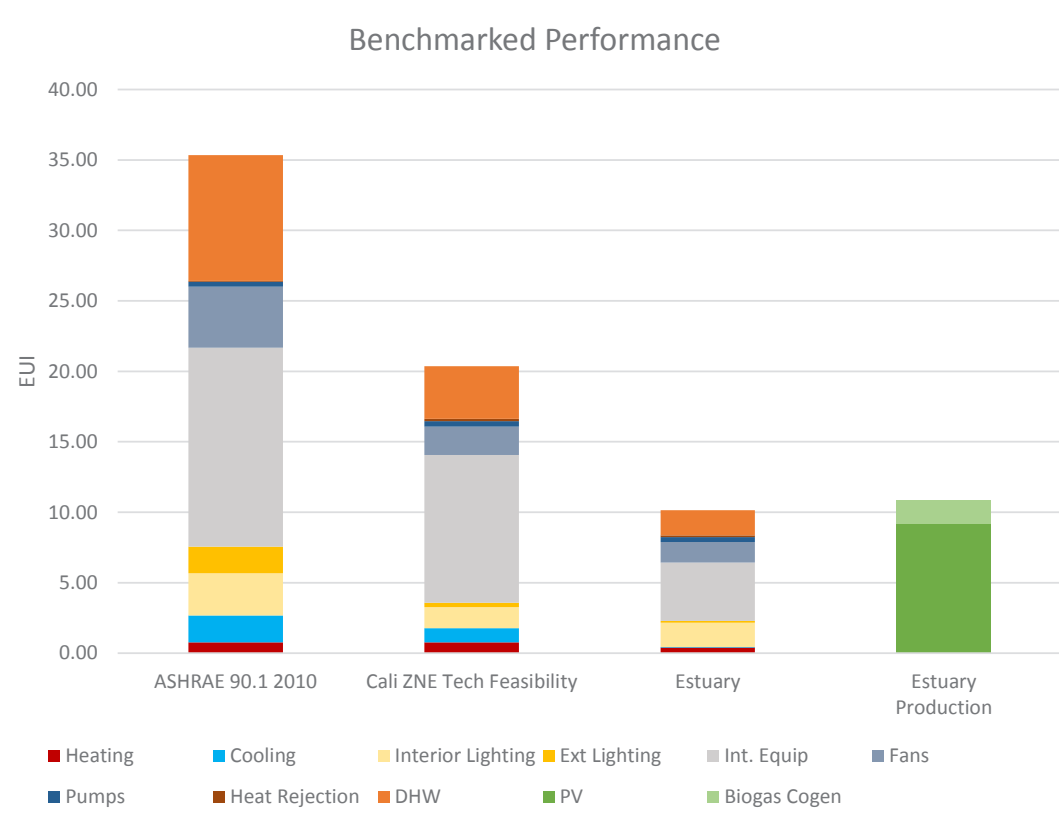
SKYLINE - external passive clothes drying stacks reduce energy demand and adds human expression to building facades.



SHARED DISTRICT SYSTEMS - energy and water systems are collected and distributed through centralized system spaces below the courtyard. Circulation atriums within the buildings allow porosity and social

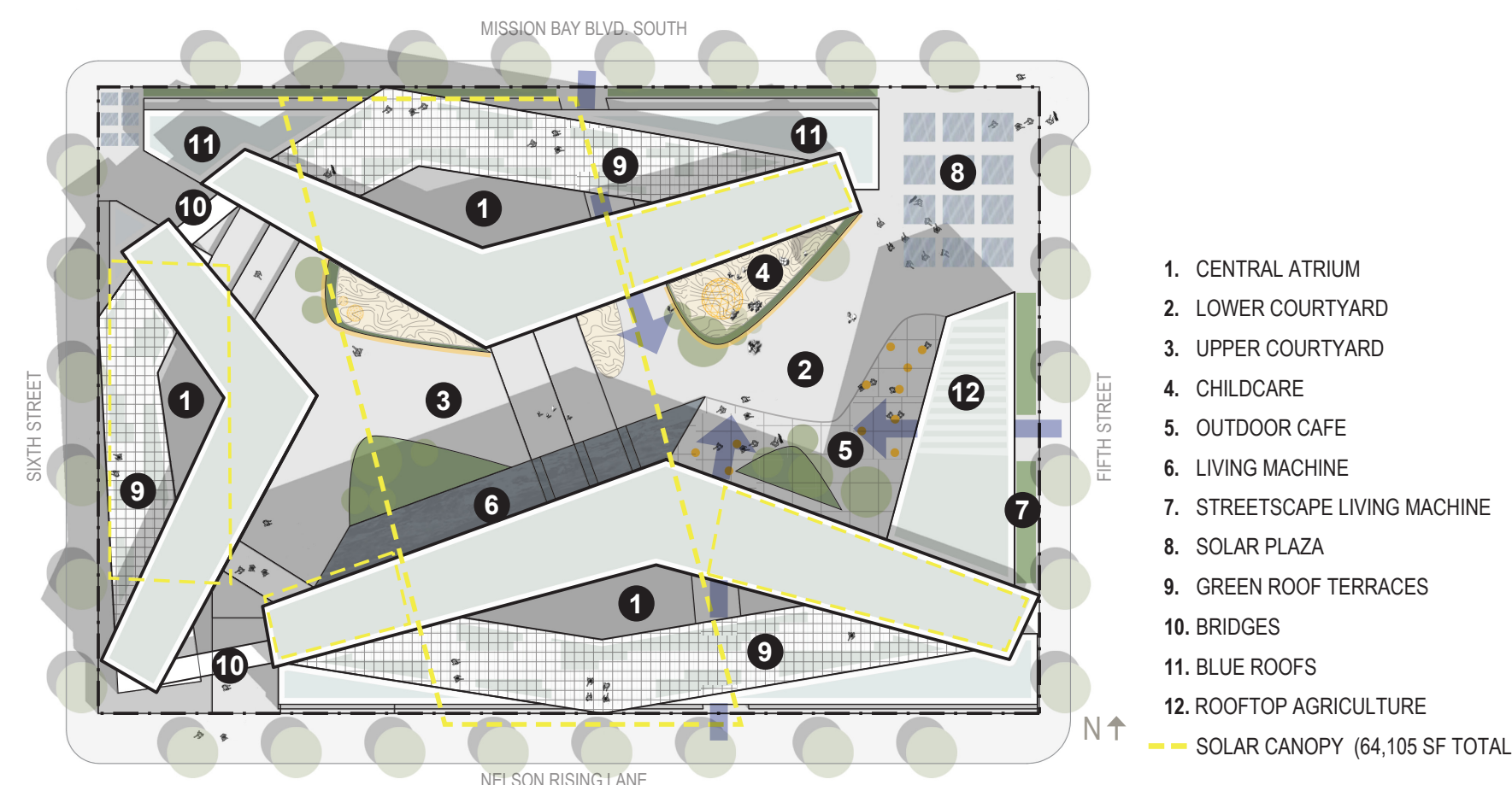


WELCOME HOME : ESTUARY weaves performance with humanity, creating community and comfort on the UCSF Mission Bay campus.



POSITIVE CHANGE - ESTUARY engages residents in reducing energy and resource demand, and creating positive social connection opportunities. Human contributions are coupled with high performance building strategies to create a 72% reduction in EUI over baseline standards.

- DAYLIGHT + VIEWS
- OPEN SPACE LINKAGES
- NATURAL COOLING
- SHARED COMMUNITY KITCHENS
- ENERGY BUDGET + RENT INCENTIVES
- SKYLINE CLOTHES DRYING
- ACTIVE STAIR CULTURE
- LIVING MACHINE + WATER REUSE
- ROOFTOP AGRICULTURE



FLOW : Stepped building masses respond to light, views and prevailing wind patterns, creating porosity and variation in outdoor spaces. Strategic access portals allow convenience and connectivity through the site and distinct access and control points for residents, day-care users and service functions.